

## Boxer

### Single Port High Speed Serial to Ethernet Gateway (Device Server)

BMS-236

#### Overview



The BMS-236 connects RS-232, 422, 485 serial devices to an Ethernet LAN/WAN providing a reliable communication connection.

The BMS-236 Windows driver installs virtual COM ports in the Device Manager of the operating system. The virtual COM port is designed to establish a connection with the BMS-236. This in turn will allow communications with the connected serial device in the same manner as a device connected to the COM port in a PC. The LAN becomes transparent to the serial device and the software running on the PC.

The BMS-236 can be configured as a TCP Client/Server or UDP. The ESport-10x operates in “Direct IP Mode”, “Virtual COM Mode”, and “Paired Mode”.

#### Key Features

- **Industrial Conformance**

Connects RS-232/422/485 devices to TCP/IP network

Supports TCP/Server, TCP/Client, UDP, and paired connection mode with heart-beat checking mechanism

Windows Virtual COM driver included for backward compatibility

10/100Mbps Ethernet; 230.4Kbps serial data rate

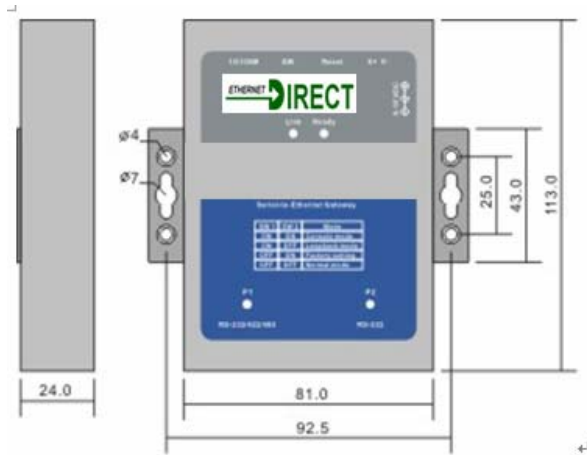
Web/Telnet/Serial consoles for device configuration

Windows utility for device configuration and management

Firmware upgradeable

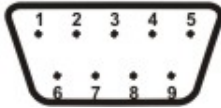
Wall and DIN-rail mountable

## Mechanical Dimension (in mm)

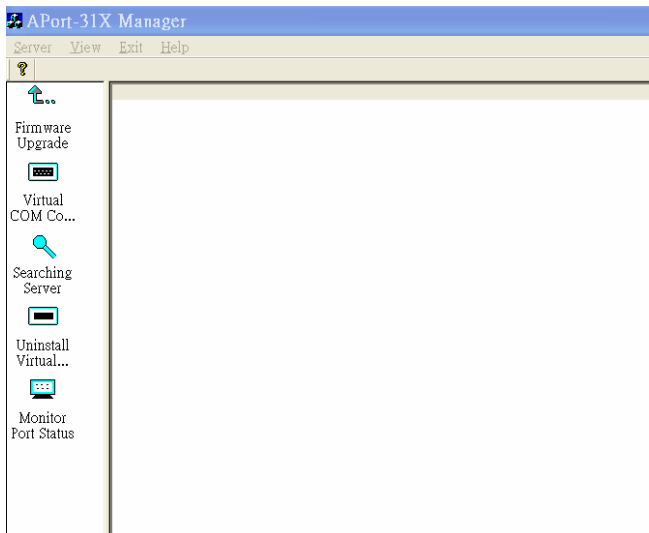


## Pin Assignment

PIN	RS-232	RS-422	RS-485
1	DCD	Rx-	-
2	Rx	Rx+	-
3	Tx	Tx+	Data+
4	DTR	Tx-	Data-
5	GND	GND	GND
6	DSR	CTS-	-
7	RTS	CTS+	-
8	CTS	RTS+	-
9	RI	RTS-	-



## Utility Screen Shot



## Specifications

### Network Interface

Protocol Technology	Type: 10/100BaseT, RJ-45 connector
Protocols	TCP, UDP, HTTP, Telnet, IP, ICMP, ARP
IP addressing	DHCP, Static IP

### Mode

Operation Mode	TCP/Server, TCP/Client and UDP mode
----------------	-------------------------------------

Special paired connection mode

Heart-beat checking mechanism (port:5300)

Virtual COM mode for Windows XP/2K/98/NT 4.0

### Serial Interface

Serial port 1	RS-232/422/485, Dip switch selectable
Serial port 2	RS-232
Connector	DB9, male
Signals	See pin assignment diagram
Baud Rate	110 bps to 230.4 Kbps
Parity	None, Even, Odd, Mark, Space
Data bit	5,6, 7, 8
Stop bit	1, 1.5, 2 bits
Flow Control	None, RTS/CTS, XON/OFF

### Configuration Method

- Web console, Telnet Console and Serial console
- Windows utility

### Software

Protocols	TCP, UDP, HTTP, Telnet, IP, ICMP, ARP
Virtual COM Driver	Windows XP/2000/NT/98

### Power

Power input	9~15VDC
Power consumption	400mA @ +12VDC

### Physical

Dimension	81 x 113 x 24 mm (WxHxD)
Weight	350 g

### Environmental

Operation Temp	0~60C, 5~95% RH
Storage Temp	-20~85C, 5~95% RH

### Regulatory Approval

- CE
- FCC

## Ordering Information

BMS-236 : Single-port High Speed Serial-to-Ethernet Gateway