

## Boxer

### Serial to Ethernet Gateway (Device Server)

BWS-136

#### Overview



The BWS-136 is an easy-to-use Serial-to-Ethernet gateway which is designed for applications requiring quick, reliable and seamless integration of existing RS-232/422/485 devices to an Ethernet network. It provides a transparent data channel between serial device and TCP/IP network, so that the serial device can be accessed by using standard TCP/IP protocols. The BWS-136 can function as a TCP server, a TCP client or an UDP node on an Ethernet network to fulfill versatile application requirements.

#### Key Features

- **Industrial Conformance**

Connect RS-232/422/485 devices to TCP/IP network

Eight programmable digital I/Os

10/100Mbps Ethernet; 38,400bps serial data rate

Supports TCP/Server, TCP/Client and UDP mode

Web/Telnet/Serial consoles for device configuration

Windows utility for device configuration and management

Firmware upgradeable

## Mechanical Dimension (in mm)

81 cm x 113 cm

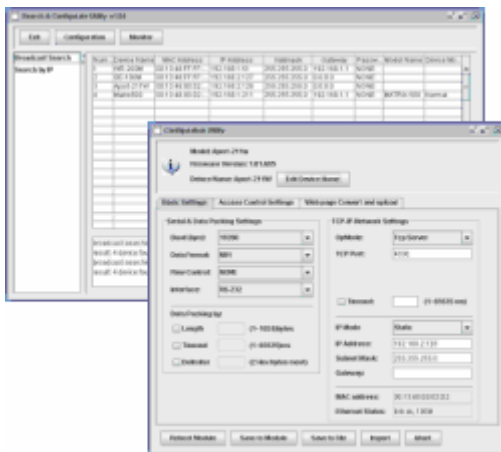


## Pin Assignment

PIN	RS-232	RS-422	RS-485	PIN	GPIO
1	DCD	Tx-	---	1	PIO 0
2	Rx	Tx+	---	2	PIO 1
3	Tx	Rx+	Data+	3	PIO 2
4	DTR	Rx-	Data-	4	PIO 3
5	GND	GND	GND	5	PIO 4
6	DSR	---	---	6	PIO 5
7	RTS	---	---	7	PIO 6
8	CTS	---	---	8	PIO 7
9	RI	---	---	9	GND



## Utility Screen Shot



## Specifications

### Network Interface

Protocol Technology	Type: 10/100BaseT, RJ-45 connector
IP addressing	DHCP, Static IP

### Mode

Operation Mode	TCP/Server, TCP/Client
----------------	------------------------

### Serial Interface

Type	RS-232/422/485, Dip switch selectable
Connector	DB9, male
Signals	TxD, RxD, RTS, CTS, DTR, DSR, DCD, GND
Baud Rate	1,200 to 38,400 bps
Parity	None, Even, Odd
Data bit	7, 8
Stop bit	1, 2
Flow Control	None, RTS/CTS, XON/OFF

### Programmable Digital I/Os

PIO0~PIO5	TTL level compatible
PIO6~PIO7	CMOS level compatible
Connector	DB9, Female

### Configuration Method

- Web console, Telnet Console(By Serial interface)
- Windows utility

### Software

Protocols	TCP, UDP, HTTP, Telnet, IP, ICMP, ARP
-----------	---------------------------------------

### Power

Power input	9~40VDC
Power consumption	70 mA @ +12VDC

### Physical

Dimension	78 x 108 x 25 mm (WxHxD)
Weight	300 g

### Environmental

Operation Temp	-10~60C, 5~95% RH
Storage Temp	-20~85C, 5~95% RH

### Regulatory Approval

- CE
- FCC

## Ordering Information

BWS-136 : Single port Serial to Ethernet Gateway